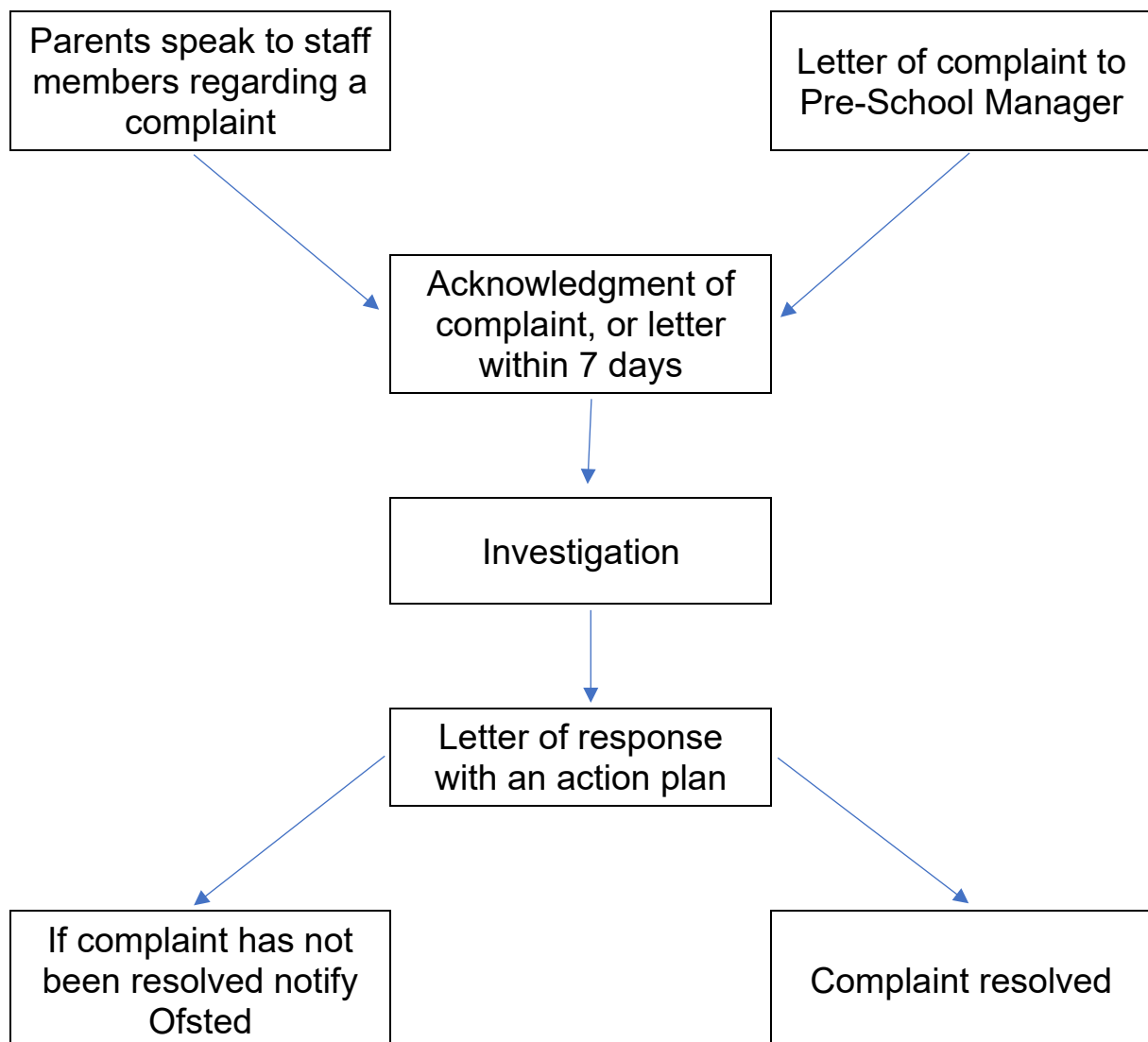




HOLY REDEEMER PRE-SCHOOL

COMPLAINTS PROCEDURE

The outcome of all complaints is recorded and available for parents and Ofsted inspectors on request



OFSTED's Complaints and Enforcement Team can be contacted by phone or in writing to:

Complaint Investigation Enforcement Team 0300 123 1231

Ofsted, The National Business Unit, The Royal Exchange Building 5th 6th
7th Floors, Piccadilly Gate, Store Street, Manchester M1 2WD

Email enquiries@ofsted.gov.uk